



KC Smart Stock  
Integrated Stock Control

Accounts  
Integrated Stock  
Management







# Contents

|  |   |
|--|---|
| KC Smart Stock.....                        | 1 |
| Overview .....                             | 3 |
| Features.....                              | 4 |
| Benefits.....                              | 5 |
| Functionality .....                        | 6 |
| Case Study: Berhams Plumbing Supplies..... | 8 |



# KC Smart Stock

Inventory and warehouse management for forward-thinking businesses: KC Smart Stock is a tablet-based stock management system that integrates with your in-house accounts software to make your warehouse or stock room more efficient.

- Gain tighter control of your stock to maximise cashflow and minimise lost revenue.
- Link directly to your in-house finance software to synchronise stock and warehousing information across the business.
- Make your warehouse team more efficient.
- Complete integration with Sage 50, Sage 200, Advanced Exchequer, Pegasus Opera II, Pegasus Opera 3 and Access Dimensions.

The screenshot displays the KC Smart Stock software interface. The main window shows the 'Stock Take Processing' screen with a table of stock take records. Overlaid on this is the 'Stock Take Processing Add' dialog, which is used to create a new stock take. The dialog includes fields for Description, Time Frame, Type, Visibility, Location, Bin Location(s), Category Range, Stock Record Range, Required By Date, and Notes. The 'Bin Location(s)' field is set to 'Bin Location Selection (All)'. The 'Category Range' is set to 'From AA PETITES RECOLTES To TRA Trainers'. The 'Stock Record Range' is set to 'From 15KGBAG 15KG Bag of bird feed To TOSPADE Digging Spade'. The 'Required By Date' is set to 15/03/2017. The 'Notes' field is empty. The dialog has 'Create Stock Take' and 'Cancel' buttons. The background window shows a table of stock take records with columns: Creation Date/Time, Description, Location, Time Frame, Scheduled Date, Type, Visibility, Status, and Required By. The table contains several rows of data, including 'One Off High Value Stock Take', 'Stock Take Alice B', 'March 2017 - Stock Take Alice A', 'February 2017 - Stock Take Alice B', and 'February 2017 - Stock Take Alice A'.

| Creation Date/Time  | Description                        | Location | Time Frame | Scheduled Date | Type      | Visibility | Status                    | Required By |
|---------------------|------------------------------------|----------|------------|----------------|-----------|------------|---------------------------|-------------|
| 14/03/2017 16:25:08 | One Off High Value Stock Take      | DEF      | Immediate  |                | Specified | Seen       | Awaiting Start By Devices |             |
| 14/03/2017 16:08:07 | March 2017 - Stock Take Alice B    | DEF      | Immediate  |                | Specified | Seen       | Awaiting Records          |             |
| 14/03/2017 16:05:08 | March 2017 - Stock Take Alice A    | DEF      | Immediate  |                | Specified | Seen       | Awaiting Assignment       |             |
| 05/02/2017 08:57:55 | February 2017 - Stock Take Alice B | DEF      | Immediate  |                | Specified | Seen       | Started                   | 17/03/2017  |
| 01/02/2017 08:49:09 | February 2017 - Stock Take Alice A | DEF      | Immediate  |                | Specified | Seen       | Started                   |             |



# Overview

Good inventory management is the key to meeting future fulfilment demands, eradicating warehousing overhead, minimising wastage and taking control of your margins.

KC Smart Stock helps you make more informed decisions by effectively managing your stock and providing on-demand analysis. Maximise your ability to respond to current and projected demand, limit the spoiling or wastage of stock and don't ever oversell again.

Easily handle multi-channel, multi-location and in-transit stock control to help you provide the best customer service, maintain SLAs, exceed customer expectation and achieve the best margins on all of your stock.

Perform accurate and effective stock takes to ensure strong stock control and confidence in your stock analysis.

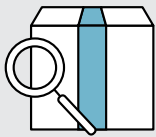
Talk to a specialist to see how KC Smart Stock could unlock untold, potential revenue from your stock room.

- **Goods –**  
Effectively manage your in, out and in-transit stock.
- **Fulfilment –**  
Ensure you meet order demand and seasonal shifts.
- **Synchronise –**  
Instant stock data synchronisation with all revenue channels and your back-office accounts software.
- **Mobile –**  
Implement a cost effective yet robust mobile solution using a range of windows tablets and barcode scanners.



# Features

KC Smart Stock comes with multifarious, powerful and well-designed features which will immediately improve the inventory management within your stock room or warehouse.



## Sales Order Picking

Assign sales orders to individual devices from a centralised system for picking.



## Stock Taking

Create 'Immediate' or 'Scheduled' stock takes and assign to individual devices.



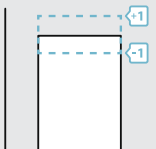
## Location Replenishment

Send replenishment requests through in-built messenger and print in-transit documentation.



## Goods Receipts

Book-in stock at various detail levels, including batch/serial/bin locations and match receipts against purchase orders.



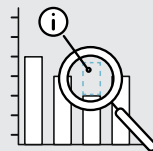
## Stock Adjustment

Make inward and outward adjustments with free-text comments and use rapid-entry through the tablet.



## Purchase & Sales Orders

Create Supplier's Orders from the tablet, with auto-printing and auto-emailing options.



## Stock Reorder

Automatically identify fulfillment requirements based on previous demand trends and seasonal shifts.



## Label Printing

Print labels and barcodes on-demand to organise your stock and synchronise with your accounts software.



## Offline Mode

Manage key tasks and operate independently without the requirement of an internet connection.



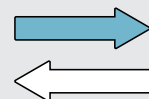
## Fully Compatible

Complete integration with Sage 50, Sage 200, Advanced Exchequer, Pegasus Opera II, Pegasus Opera 3 and Access Dimensions.



## Mobile & Adaptable

Robust mobile solution using a range of Windows tablets and barcode scanners suitable for any industry or requirement.



## Integrate Seamlessly

Link directly to your in-house finance software to synchronise stock and warehouse information across the business.

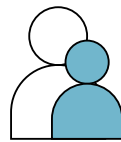
# Benefits

Benefits of KC Smart Stock surpass the stockroom and warehouse. These business-wide benefits will improve multiple areas within your company.



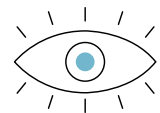
## Manage Your Stock

Gain tighter control of your stock to maximise your cashflow and minimise lost revenue.



## Become More Efficient

Make your stock replenishment team more efficient, remove potential bottle necks and prepare for seasonal variations.



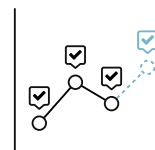
## Visibility

Access your current financial position with real-time data on-demand and make more informed business decisions faster.



## Minimise Waste

Record and report on all stock shrinkage to act quickly on reasons for loss.



## Meet Your Demands

Meet future demand accurately through historic and seasonal procurement analysis.



# Functionality

## ○ Stock Taking –

- ✓ Create immediate or scheduled stock takes and assign these to your devices from the control centre.
- ✓ Rapidly enter stock count figures on the tablet device.
- ✓ Select from Specified or Random stock take modes.
- ✓ Select from Seen (show snapshot quantities) or Blind (don't show snapshot quantities) stock take modes.
- ✓ Issue stock takes by ranges of:
  - > Stock code
  - > Category
  - > By warehouse/stock room location
  - > By bin location
- ✓ Generate and print reports on:
  - > Defined stock take lists
  - > Stock variances
  - > Exceptions (with optional variance costs and quantities)
- ✓ Report instantly on stock take status including items counted, variances identified and uncounted items.
- ✓ Incrementally and automatically save stock take progress as quantities are entered or scanned.
- ✓ Generate a Stock Variance Tolerance Report to identify all stock variances: monetary (over £x) or numeric (over x units).
- ✓ Create recount cards from variance reports.

## ○ Stock Adjustments (+ & -) –

- ✓ Inward and outward adjustments with free-text comments.
- ✓ Simply and rapidly enter stock adjustment through the tablet device.

## ○ Location Transfers –

- ✓ Easily move stock with straight transfers and direct movements.
- ✓ Optionally set "in-transit" mode for goods currently being transported.

## ○ Location Replenishments –

- ✓ Request replenishment and fulfilment from the tablet devices.
- ✓ Send replenishment requests through in-built messenger.
- ✓ Print "in-transit" documentation.
- ✓ Set instant replenishment or "in-transit" mode.

## ○ Purchase Order Creation –

- ✓ Create Supplier Purchase Orders from the tablet devices.
- ✓ Auto-print and auto-email options.
- ✓ Synchronise wirelessly with your in-house accounts software.

## ○ Goods Receipt –

- ✓ Book-in stock at various detail levels, including batch/serial/bin locations.
- ✓ Print "goods received" documentation.
- ✓ Match goods-in receipts against Purchase Orders from your in-house accounts software.
- ✓ Manage Purchase Orders by due date, product or supplier.
- ✓ Create partial receipts with options to keep orders open or close them off.
- ✓ Create barcodes or labels following receipt of goods.

## ○ Sales Order Creation –

- ✓ Create Customer Sales Orders from the tablet device.
- ✓ Auto-print and auto-email options.
- ✓ Synchronise wirelessly with your in-house accounts software.



### ○ Sales Order Picking –

- ✓ Assign specific Sales Orders to devices for picking from the control centre.
- ✓ Segment order picking in to stages.
- ✓ Help the pickers with pick lists, stock and bin locations displayed on the device and sort by stock code, bin location, quickest route etc.
- ✓ Generate “Today’s” picking list based on the picking lead time of “dispatch day”, or today.
- ✓ Prioritise Sales Orders for picking on “Today’s” list with priority flags.
- ✓ Generate picking lists manually, by location group, by next x items or by customer.
- ✓ Assign Sales Order Picking Lists to individual users and temporary picking bins, or assign them to multiple users and picking bins based on bin ranges.
- ✓ Determine picking based on FIFO when using batch or serial tracking.
- ✓ Streamline picking routes to optimise picking multiple orders comprising of the same products automatically.
- ✓ Configure bin locations to create picking routes and generate picking lists based on these pre-defined routes.
- ✓ Create and print labels for dispatch.
- ✓ Sort picking lists by due date, with today first.
- ✓ Generate and print dispatch notes.

### ○ Stock Reordering –

- ✓ Auto-suggest Purchase Order creation based on:
  - > Negative stock
  - > Maximum stock level
  - > Location
  - > Supplier
- ✓ Order stock based on historical performance.
- ✓ Average and Seasonal modes available.

### ○ Printing Stock Labels –

- ✓ Various label formats available.
- ✓ Print barcodes by :
  - > Range of stock code
  - > Range of category
  - > Scanning of barcodes
  - > Price changes since last print
  - > Range of preferred supplier
- ✓ Printing either VAT inclusive and/or exclusive pricing.

### ○ Stock Enquiries –

- ✓ Query stock directly from the tablet.
- ✓ List all available stock and locations.
- ✓ View stock balances showing stock on-hand, on-purchase-order or on-sales-order.
- ✓ View allocated stock, either general or item allocation.
- ✓ Search by product, bin, batch or serial number.
- ✓ Query stock movements.
- ✓ Scan bin barcode or items in bin to show available stock to move.

### ○ Control Centre –

- ✓ Instantly view on-demand reports:
  - > Stock counts due today
  - > Stock counts performed today with variances
  - > Stock shortages based on “reorder level” now, tomorrow, next week or next month.
  - > Average stock days
  - > Average stock days by product
  - > Purchase orders overdue
  - > Sales dispatch overdue
  - > Priority sales orders
  - > Stock ageing
- ✓ Issue stock recounts to devices.
- ✓ Identify stock variances from stock counts.
- ✓ Post either all adjustments or partial adjustments if recount required.
- ✓ In-built messaging system between control centre and tablet devices to raise queries and issue instructions in real-time, over multiple warehouses or stock locations.

# Case Study: Berhams Plumbing

New stock management & EPOS system streamlines business for growth & expansion.

Berhams Plumbing Supplies in Lewisham stock over 10,000 separate lines and provide expert knowledge and advice to the community across South East London.

The staff at Berhams were struggling to efficiently serve the growing number of trade and retail customers after moving to their new location back in 2016. With so many stock lines it was difficult to give the best customer service without knowing what was in stock, and what alternative products would suit. A lot of time was being needlessly wasted to meet the requirements of customers whilst offering the personal approach of an independent trade counter.

Planning to expand the business with a second site in the near future and increased requirement for a more streamlined customer journey on the web, Berhams were in desperate need of a seamless stock and POS solution. With more and more traffic to their website, stock visibility was becoming increasingly complicated often leading to the sale of out-of-stock items.

"We entertained 4 solutions, and chose KC Solutions as their software matched the vision of our company, and immediately we felt they would be the best fit to help us achieve our goal", said Rob Wicker, Operations Director at Berhams. He added, "I liked the fact that they understood our requirements and came to see how we worked, so they could scope the project to fit in with our other systems."

Berhams were passionate about keeping what was unique to them: the way they worked and their internal systems. "I thought that the way we worked could be seen as unique, but the KC Smart Stock and KCPOS products could be setup to fit us – other solutions would have forced us to change our special way of working."

Linking to Sage 50, the integrated stock and EPOS solutions immediately gave Berhams true visibility of their stock and main business processes, showing on-demand reports at any-time on any device. From day one, they've eradicated the bottle neck in processing sales, enabling them to instantly serve more people. They're now able to easily barcode new items as they arrive and the built-in trade-counter "haggle" functionality has been a revelation, allowing any of the staff to instantly calculate a minimum profit limit on-screen when customers want to haggle.

"From Googling to go-live, it was all wrapped up in 3 months", Rob exclaimed as he remarked on the customer experience with KC Solutions.

"[KC Solutions] were clear and concise, yet patient and accommodating with our questions and our need to have meetings outside of the 9-5 due to how busy we are. They understood that



"From Googling to go-live, it was all wrapped up in 3 months"

this was a huge time investment for us and an upheaval throughout the business, and worked with us every step of the way to make the transition as smooth as possible. I'm really pleased with what we've achieved together – the system does everything that we were told it would do, and more".

In the year since go-live of the solution, other key benefits of a truly integrated trade counter and stock room will start to show. Stock forecasting with seasonal shifts and automated reordering will make the whole supply and demand a simpler process. Trending reports and process dashboards allow for informed business decisions to be made quicker and the tedious and treacherous stock-takes have been transformed as they no longer have to close the store to do them.

"KC Solutions are our partners now. We can see that they are with us for the duration, and just to make things even sweeter, their support delivers a speedy, friendly and knowledgeable service whenever we need them".

## Stock Management Project Requirements

- ✓ Multiple tablets to manage the stock room
- ✓ 10,000+ stock items managed
- ✓ Integration between stock, EPOS & accounts
- ✓ Multiple tills to manage trade counter
- ✓ Trade Haggle functionality
- ✓ Customisable menus & functionality
- ✓ Fast implementation
- ✓ Integration with eCommerce
- ✓ Expert support on hand

# The Power Of Automated Integration

Realise the unlimited potential of an integrated system by synchronising your EPOS and stock information with your accounts software.

Automatically transfer product, pricing, customer account information and stock or warehouse data as often as you need to without wasting a second, allowing staff time to focus on the tasks that really matter. This removes human error and allows for a completely efficient process from start to finish.

Synchronise your product, stock and customer data over multiple channels from stores, to warehouses to remote branches, to your website/app, to trade shows and exhibitions and more - and report on all of it in real time.



Automatic transfer of data



Instantly update product details across multiple sites



Save valuable time otherwise spent inputting data



Efficient stock control



Free up staff for more important tasks



Reduce human error



Effectively report on till operator performance



Multiple Ticketing Options



Complete Marketing Suite



Full Reporting Functionality



Sell Tickets Online

**Extend Even Further With:**  
Native Integration To  
DigiTickets & Magento





