

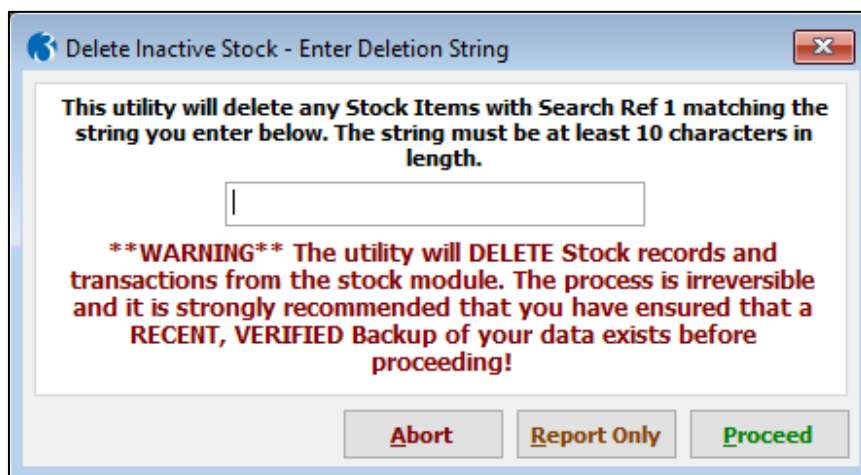
Stock Delete Utility

The Stock Delete Suite consists of the following bespoke utilities:

- ❖ **Delete Stock by Search Ref 1**
Allows the user to delete stock record using "Search Ref 1"
- ❖ **Delete Stock by Category**
Allows the user to delete stock record using "Stock Category"
- ❖ **Remove Dormant Supplier Products**
Allows the user to remove dormant stock items from the supplier product table. Dormant stock items are those items that have been updated as dormant in stock processing.
- ❖ **Stock Export Utility**
Allows the user to export stock items into Microsoft Excel spreadsheet
- ❖ **Stock Import/Update Utility**
The Stock Import Utility allows the user to import and update stock items defined on a Microsoft Excel spreadsheet.

Stock Delete by Search Ref 1

The utility will be presented as a menu option named "Delete Stock by Search Ref 1" within the Stock -> Utilities menu. The user would be prompted to specify "Search Ref 1" of the stock record to be deleted.



There are three option buttons available for the user to select:

Abort – Aborts the process.

Report Only – Runs the process and Audit Report as a 'Dummy Run', to enable reporting on which items can and cannot be deleted, without actually deleting anything.

Proceed – Runs the process and Audit Report, deleting all items that pass the validation checks.

Stock Delete Validations:

Checks implemented on stock delete are as follows:

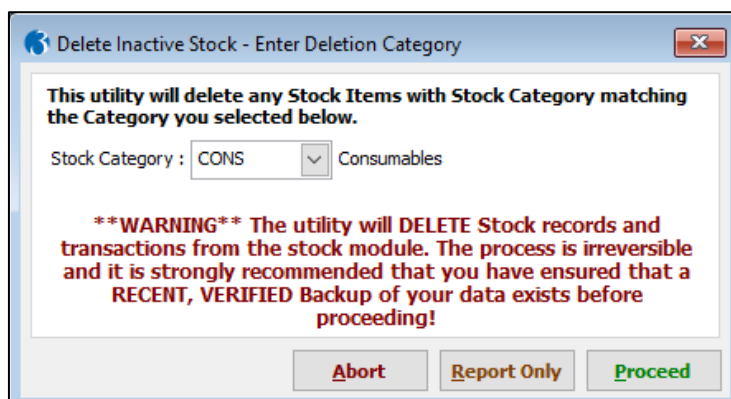
- In-Stock level must be less than or equal to zero on both the stock header record and all stock warehouse entries.
- Item must not be batch or serial traceable.
- If the item is either a BOM Assembly or Component, it must not be on a current uncompleted Works Order.
- If the item is a BOM Assembly and have components, the user will need to remove the components to be able to delete the stock.
- Item must not be listed on an Order or Delivery Note.
- Item must not be on a Model P/Order.
- Item must not be on a Requisition P/Order.
- Item must not be on an Uncommitted P/Order.
- Item must not be on an Unsatisfied P/Order.
- If the item is on a Document, Quote or Pro-forma, the document line will be changed to a non-stock item.

Audit Report:

If the stock item to be deleted fails any of these tests, it will not be deleted and the audit report will list all reasons for failure.

Stock Delete by Category

The utility will be presented as a menu option named “Delete Stock by Category” within the Stock -> Utilities menu. The user would be prompted to specify “Stock category” of the stock record to be deleted.



There are three option buttons available for the user to select:

Abort – Aborts the process.

Report Only – Runs the process and Audit Report as a ‘Dummy Run’, to enable reporting on which items can and cannot be deleted, without actually deleting anything.

Proceed – Runs the process and Audit Report, deleting all items that pass the validation checks.

Stock Delete Validations:

Checks implemented on stock delete are as follows:

- In-Stock level must be less than or equal to zero on both the stock header record and all stock warehouse entries.
- Item must not be batch or serial traceable.
- If the item is either a BOM Assembly or Component, it must not be on a current uncompleted Works Order.
- If the item is a BOM Assembly and have components, the user will need to remove the components to be able to delete the stock.
- Item must not be listed on an Order or Delivery Note.
- Item must not be on a Model P/Order.
- Item must not be on a Requisition P/Order.
- Item must not be on an Uncommitted P/Order.
- Item must not be on an Unsatisfied P/Order.
- If the item is on a Document, Quote or Pro-forma, the document line will be changed to a non-stock item.

Audit Report:

If the stock item to be deleted fails any of these tests, it will not be deleted and the audit report will list all reasons for failure.

Remove Dormant Supplier Products

The utility will be presented as a menu option named "Remove Dormant Supplier Products" within the Stock -> Utilities menu.

Bespoke Process

The utility will remove stock items from the supplier product data that have been updated as dormant in stock processing.

Selection of this option will prompt the user to confirm that they wish to proceed.

Exclusive access to the Supplier Products table will be required. The utility will then check all stock reference in supplier product data and lookup the corresponding reference in stock data. If the stock record has been marked as "Dormant", the supplier stock record will be permanently deleted.

Export Stocks Utility

The utility will be presented as a menu option named "Stock Export Utility" within the Stock -> Utilities menu.

Selection of this option will invoke a process that allows the user to specify the name and location of the Microsoft Excel file to export stock records.

No limitations will be placed on the name or location of the file and the file **will be saved as Microsoft Excel 5.0/95 workbook** with the format defined below.

Stock Export Excel Format:

Col	Name	Type\Len	Remarks
A	Stock Ref	Char (16)	Opera Stock Ref
B	Stock Desc	Char (40)	Stock Description
C	Last Issue Date	Date (8)	Last Issue Date
D	Search Ref 1	Char (10)	Search Ref 1

Stock Import/Update Utility

The utility will be presented as a menu option named "Stock Import/Update Utility" within the Stock -> Utilities menu.

Selection of this option will invoke a process that allows the user to browse for and select the Microsoft Excel file to import.

No limitations will be placed on the name or location of the file other than it **must be saved in Microsoft Excel 5.0/95 workbook format** and it must be in the format as defined in format below.

Stock Import/Update Excel Format:

Col	Name	Type\Len	Remarks	Mandatory
A	Stock Ref	Char (16)	Opera Stock Ref	Yes
B	Stock Desc	Char (40)	Stock Description	Mandatory if creating new stock record
C	Last Issue Date	Date (8)	Last Issue Date	No
D	Search Ref 1	Char (10)	Search Ref 1	No

Stock Delete Utility - £350.00

Annual Maintenance & Support - £85.00