

# Opera 3 SQL SE Fixed Assets

## Make the most of your assets

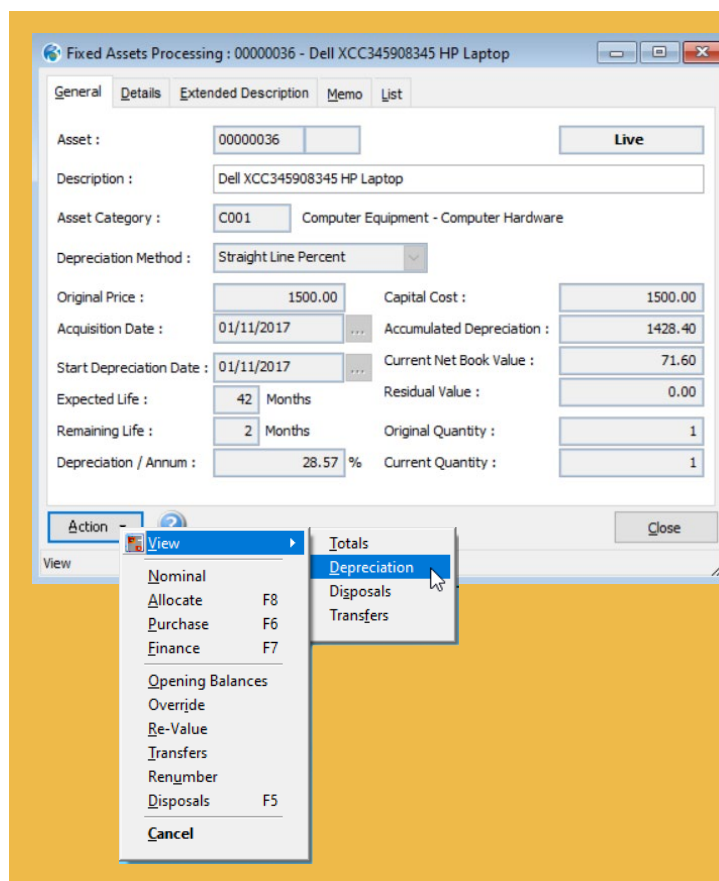
Fixed Assets for Opera 3 SQL SE maintains a complete register of your company's assets, helping you to stay in control of the resources your company has invested in. Avoid misappropriation and make the most of the value of your assets by managing them in the most efficient way.

## Take the pain out of depreciation calculations

Fixed Assets for Opera 3 keeps track of your company's assets from initial acquisition through to transfer and disposal, while tracking their depreciation rates and maintaining the correct value for them. It caters for all types of assets, so you can record details of any Finance or Operating Lease and Hire Purchase or Lease Purchase assets, assets owned by your company or assets of any other type. Depreciation is automatically calculated and deducted until an asset's residual value is reached. Depreciation and disposal details to date can be recorded for assets acquired in previous periods or years.

Assets which have historically been maintained in an Excel spreadsheet can be imported into Opera 3 SQL SE Fixed Assets via an Import routine, making it easy to import not only existing records but also any other assets in bulk, as and when required.

Opera 3 SQL SE Fixed Assets can also be linked to the Nominal Ledger, with Cost Centre and Advanced Nominal analysis, and integrates with the Purchase Ledger, Purchase Invoice Register and Purchase Order Processing so that a new asset can be created automatically when a supplier invoice is posted.

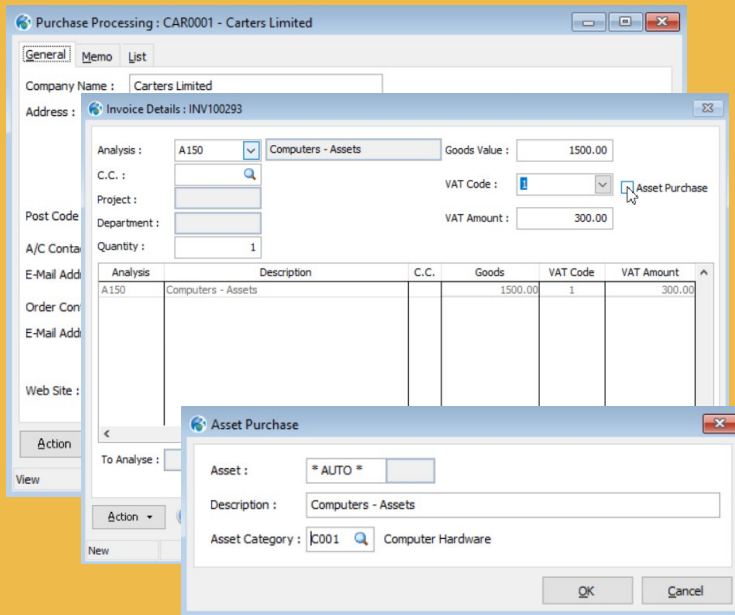


Asset Details

## Fixed Asset Features

- A fully integrated Fixed Assets system which accepts postings from other applications within the Opera 3 SQL SE solution, while posting depreciation to the Nominal Ledger in real time.
- Optional link to Nominal Ledger with Cost Centre and Advanced Nominal analysis.
- Integration with Purchase Order Processing, Purchase Ledger and Purchase Invoice Register for automated asset creation from the supplier invoice.

- Report on depreciation charges for up to 24 Nominal periods.
- Create and link sub-assets to an existing asset.
- Enter opening balances for assets acquired in previous periods or years.
- Numbering of assets defined by the user or automatic.
- Re-number main assets, with automatic sub-asset numbering.
- Record asset quantities.
- Record finance, supplier and insurance details.
- Full or partial asset transfer for locations or cost centres.
- Change depreciation method and backdate depreciation charges.
- Depreciation method, depreciation rate and category override facility.
- Revaluation of current year and prior year assets.
- Previous year depreciation and adjustments.
- Global insurance update for percentage or fixed amount increases or decreases.
- Full or partial disposals; disposal methods can be defined by the user.
- Reports included: Additions report, Depreciation Forecast report, Disposals/Transfers reports, extensive audit rails, Statutory Movement report.
- Integration with Pegasus XRL for MS Excel analysis and reporting.



### Asset Purchase

- Import routine for assets previously maintained in Excel spreadsheets and for ad hoc bulk import of assets.
- Assets grouped by Categories and Balance Sheet Groups.
- User-definable fields can be added to Category Groups.
- Asset location and reporting facility.
- Methods of depreciation: Straight Line Amount, Straight Line Percentage, Reducing Balance, Immediate Write Down, Manual.
- Depreciation calculated per period or days in period.

Asset	Cost Centre	Location	Nominal Code	Quantity	Capital Cost	Depreciation This Period	Depreciation This Year	Depreciation To Date	Net Book Value	Status
Category Group C01 Computer Equipment - Computer Hardware										
00000011	ADM	01	Q230 ADM	1	160.00	0.00	0.00	160.00	0.00	
00000011	ADM	01	Q230 ADM	1	160.00	0.00	0.00	160.00	0.00	Fully Depreciated
00000012	ADM	01	Q230 ADM	1	361.66	0.00	0.00	361.66	0.00	
00000012	ADM	01	Q230 ADM	1	361.66	0.00	0.00	361.66	0.00	Fully Depreciated
00000014	SAL	02	Q230 SAL	1	312.28	0.00	0.00	312.28	0.00	
00000014	SAL	02	Q230 SAL	1	312.28	0.00	0.00	312.28	0.00	Fully Depreciated
00000016	SAL	01	Q230 SAL	5	625.00	0.00	0.00	625.00	0.00	

Detailed Depreciation Report



**Pegasus Software** Orion House, Orion Way, Kettering. NN15 6PE

**T:** 0800 919 704  
**T:** +44 (0)1536 495000  
**F:** +44 (0)1536 495001  
**E:** info@pegasus.co.uk

@PegasusSoftware  
 pegasus-software-ltd  
[www.pegasus.co.uk](http://www.pegasus.co.uk)